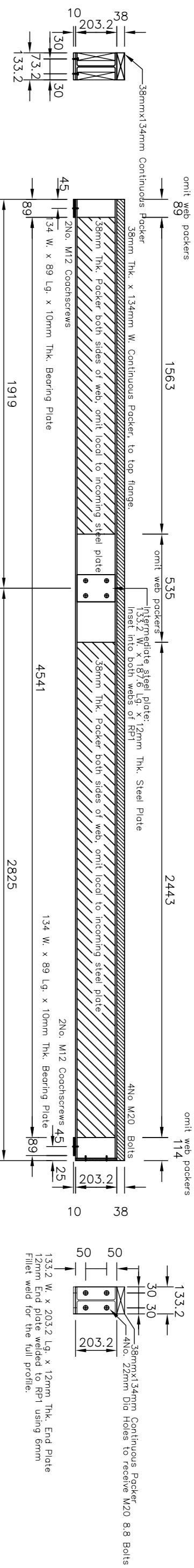
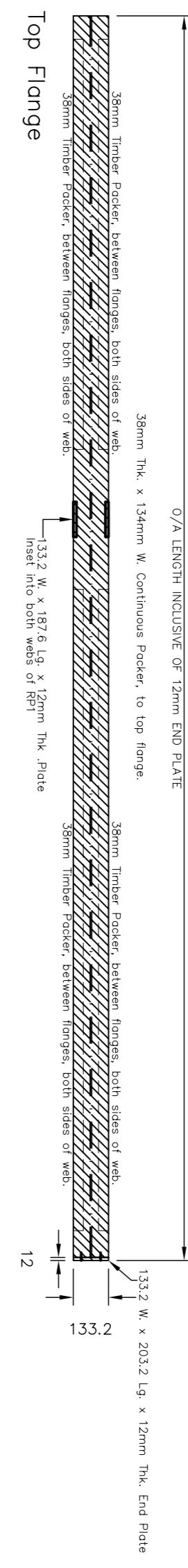


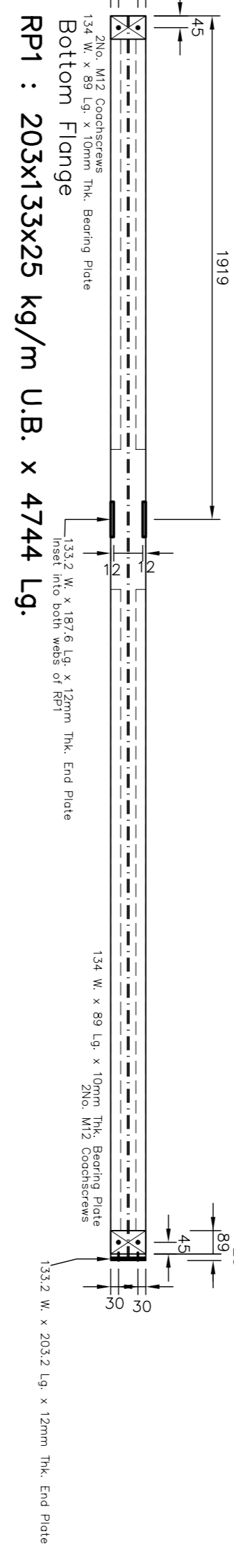
Dimensions indicated are to unfinished structural timber / masonry faces.



Longitudinal Section

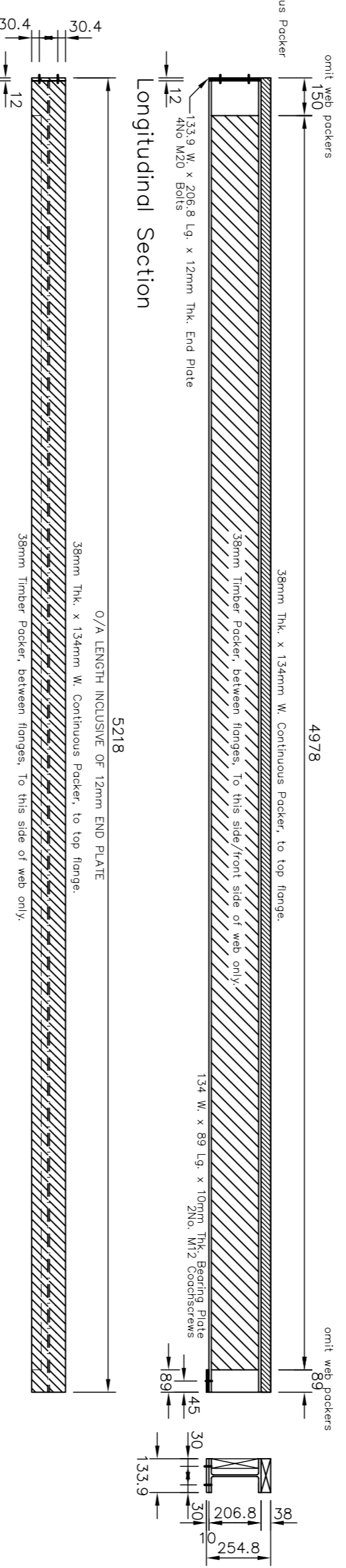


Top Flange

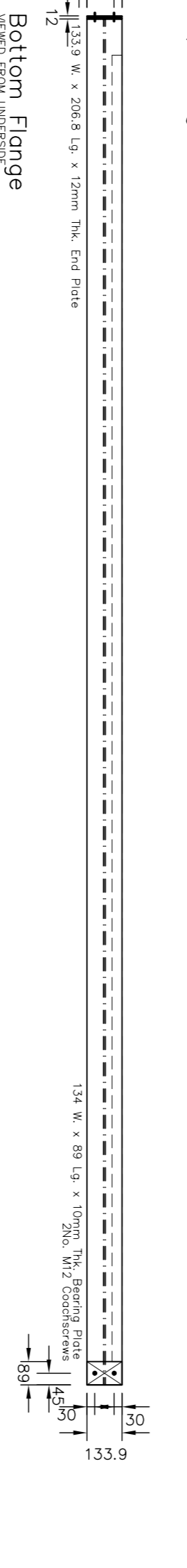


Bottom Flange

RP1 : 203x133x25 kg/m U.B. x 4744 Lg.

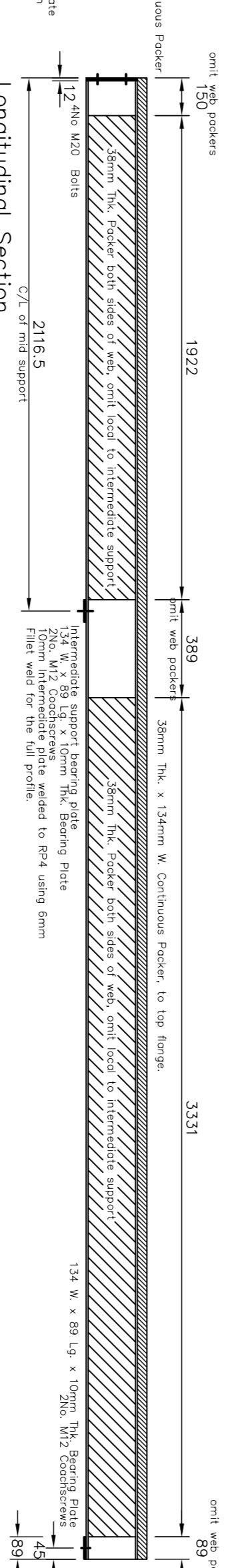


Longitudinal Section

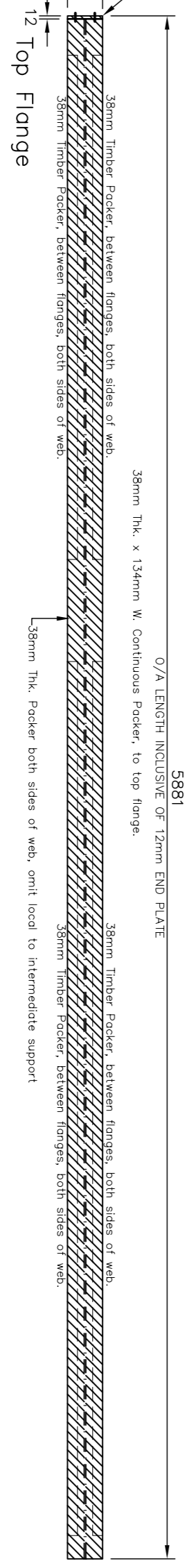


Top Flange

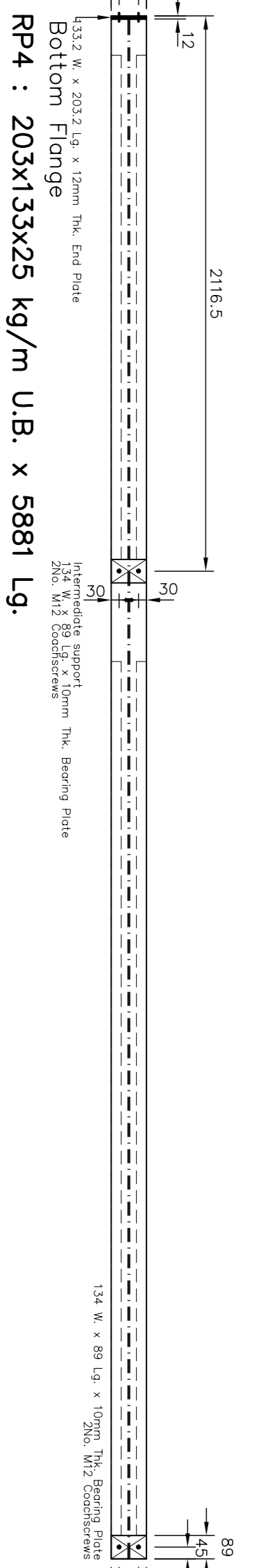
RP2 : 203x133x30 kg/m U.B. x 2722 Lg.



Longitudinal Section

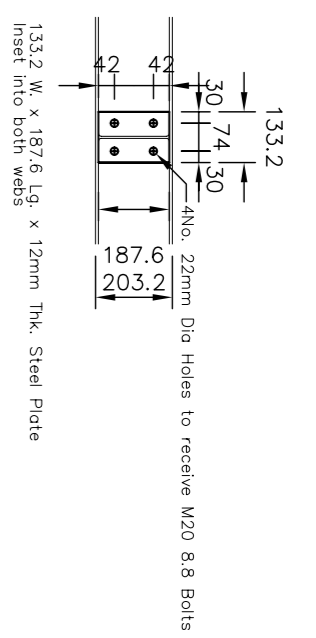


Top Flange



Bottom Flange

RP3 : 203x133x30 kg/m U.B. x 5218 Lg.



Longitudinal Section

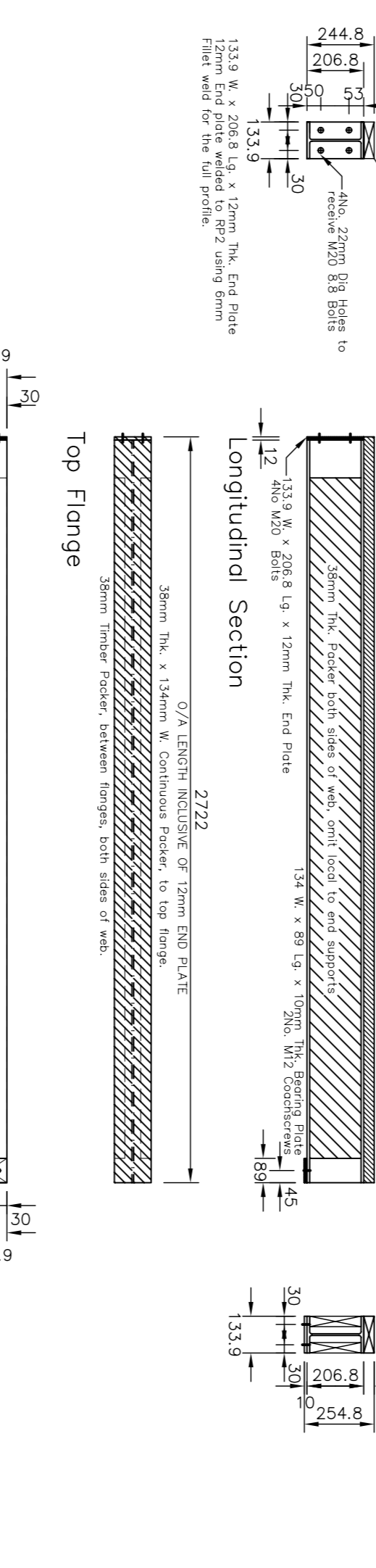


Top Flange

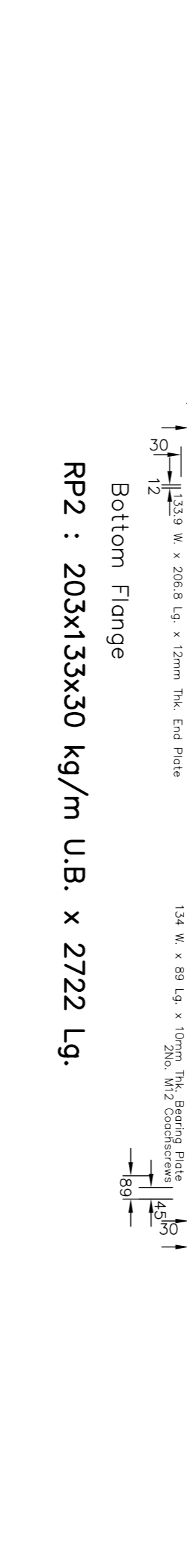


Bottom Flange

RP4 : 203x133x25 kg/m U.B. x 5881 Lg.



Longitudinal Section



Top Flange

RP5 : 203x133x30 kg/m U.B. x 2116.5 Lg.

ALL STEELWORK TO BE PROTECTED AND FINISHED IN ACCORDANCE WITH MANUFACTURERS RECOMMENDATION AND BEHOLD THE STRUCTURAL STEEL IN BUILDINGS OF ZINC PHOSPHATE PRIMER AND 2 COATS OF CHROMIATED RUBBER TO 150mm ABOVE FFL ALTERNATIVELY STEEL TO BE GALVANIZED.
ALL BOLTS TO BE GRADE 8.8
ALL BOLTS TO BE GRADE 8.8

FOR CONSTRUCTION
 PRELIMINARY
 FOR APPROVAL

Scale	1/50	Date	14th 2008	Drawn	SID	Checked	MI(1)
Cont. No.	P108/03			Dwg. No.	M(1)		

SPENCER JONES DESIGN LTD
TIMBER FRAME DESIGNERS

FLA, 145A WEST RIDGE, LINDFIELD, ST BRIDGES, QLD 4076
TEL: 07 56 78 88 88 FAX: 07 56 78 88 73
EMAIL: INFO@SPENCERJONESDESIGN.COM

Rev.	Date	Amendment
1		ANOTHER GOOD DESIGN

Site: **SOMEWHERE NICE**

Drawing Title: **ROOF MANUFACTURE**